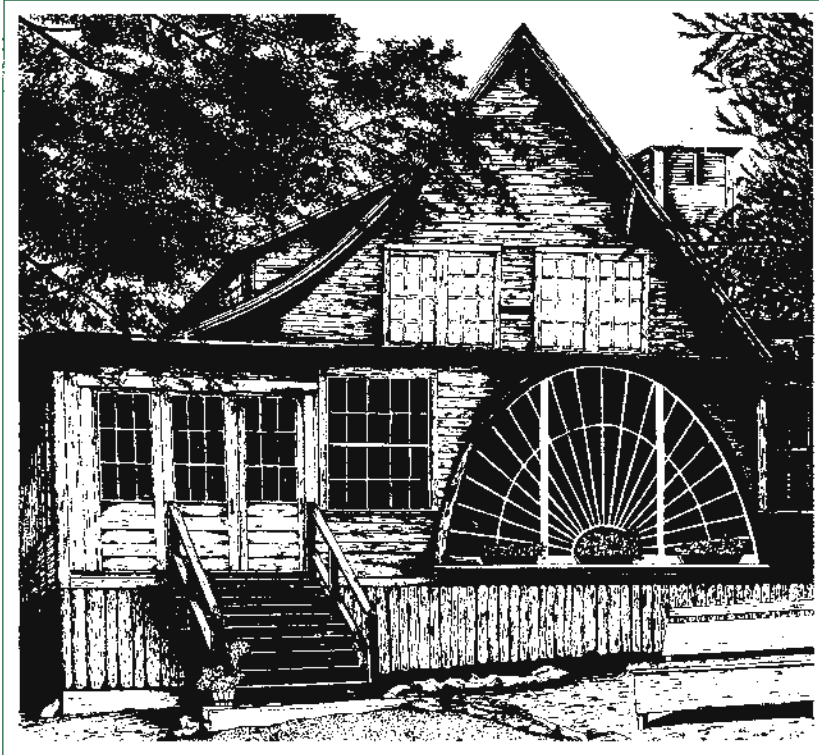
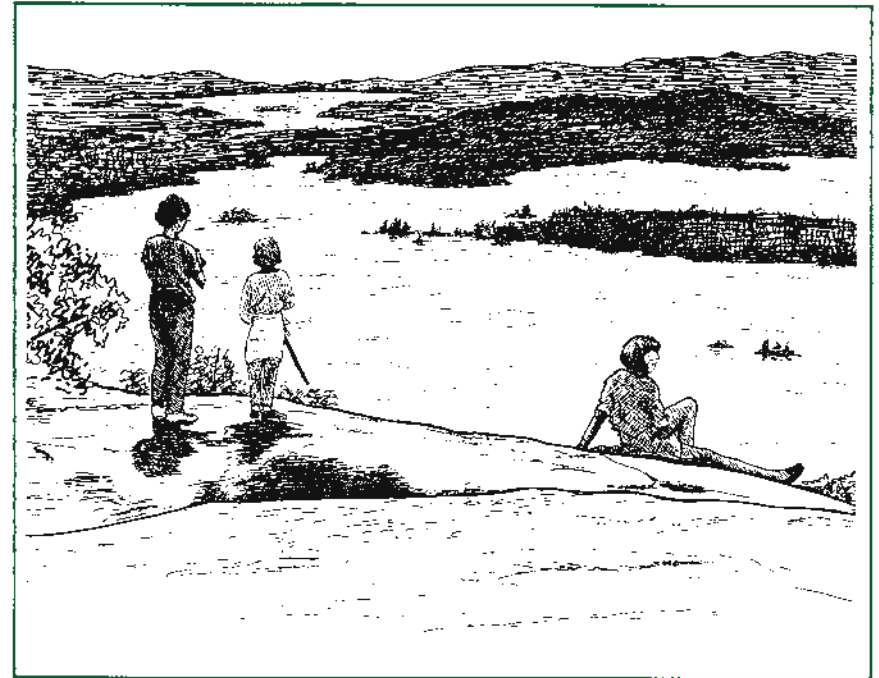


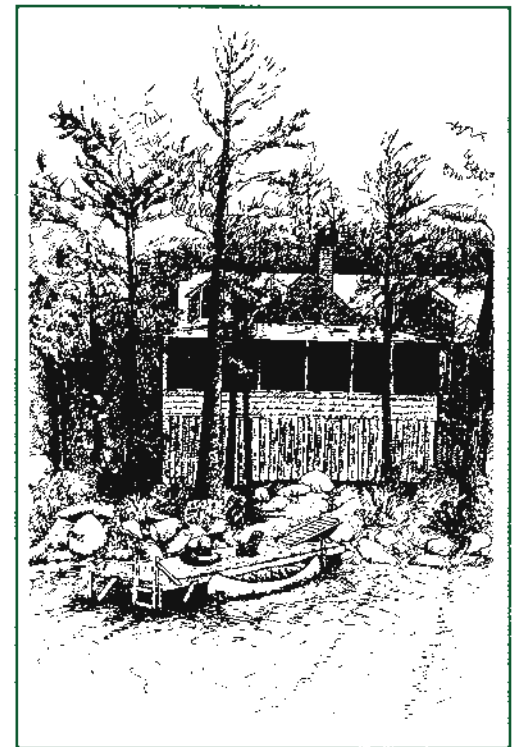
A Family Camp Since 1897

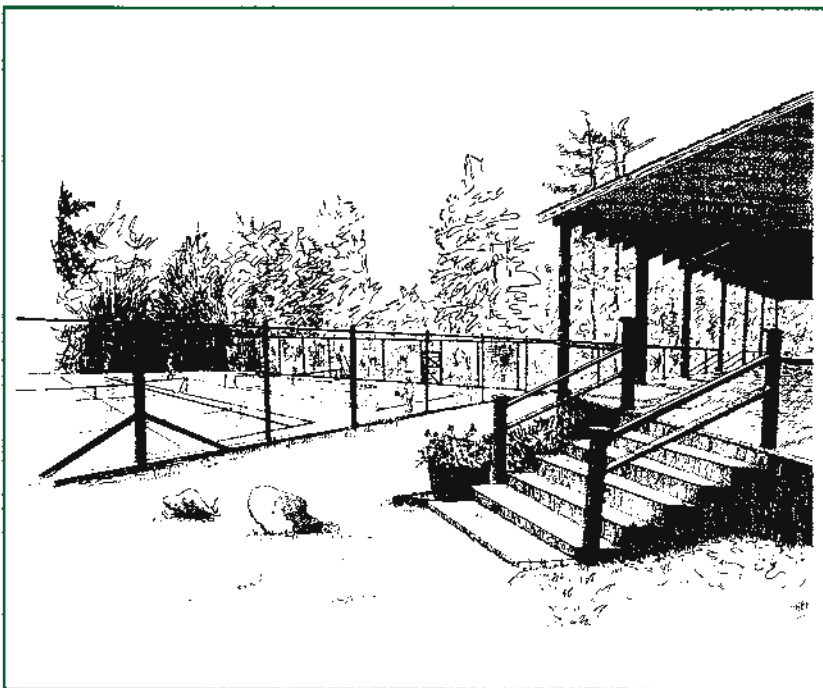


ON SQUAM LAKE

*Rockywold-Deephaven
Camps, a piece of the past
located at the southern
edge of the White Mountain
National Forest on
Squam Lake in Hold-
erness, New Hampshire.*

A family vacation camp since 1897, RDC has been providing its guests a unique family living experience offering rustic simplicity, friendly services and an unsurpassed natural setting.





RECREATION

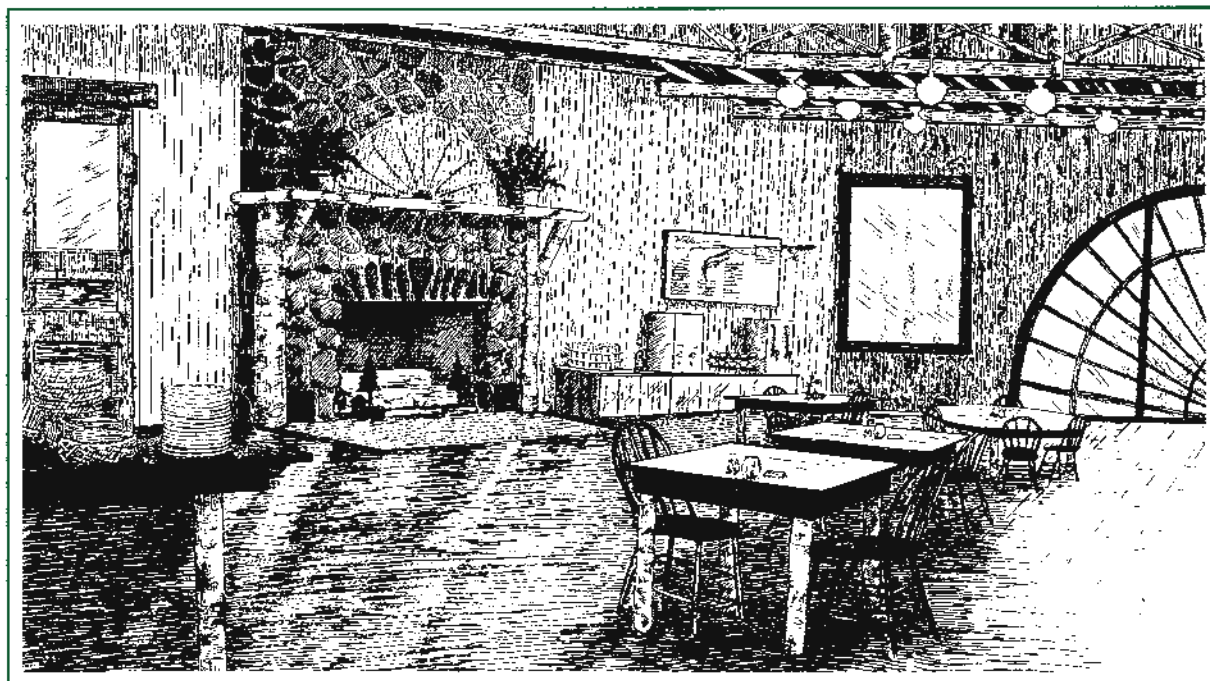
Our guests enjoy the use of eight Har-Tru tennis courts, a ball field, basketball court, toddler playrooms, swimming floats, and library/reading rooms. Weekly square dances, talent shows and rainy day activities are scheduled in our rustic open-sided auditorium by our Recreation Staff. This crew also runs tennis tournaments, organized games and sports, picnics, boat and bicycle tours, spectacular hiking, swimming and sailing events, nature walks, ecology boat tours and more! Canoes, Sunfish, rowboats, kayaks and bicycle rentals are also available.

DINING

The meals are served buffet-style with each family having their own table. The food is varied, to include vegetarian entrees, a full salad bar and several flavors of ice cream and frozen yogurts. There's always a tray of bread, peanut butter, and jelly for picky young eaters, and the kitchen will put up box lunches for hikers and picnickers.

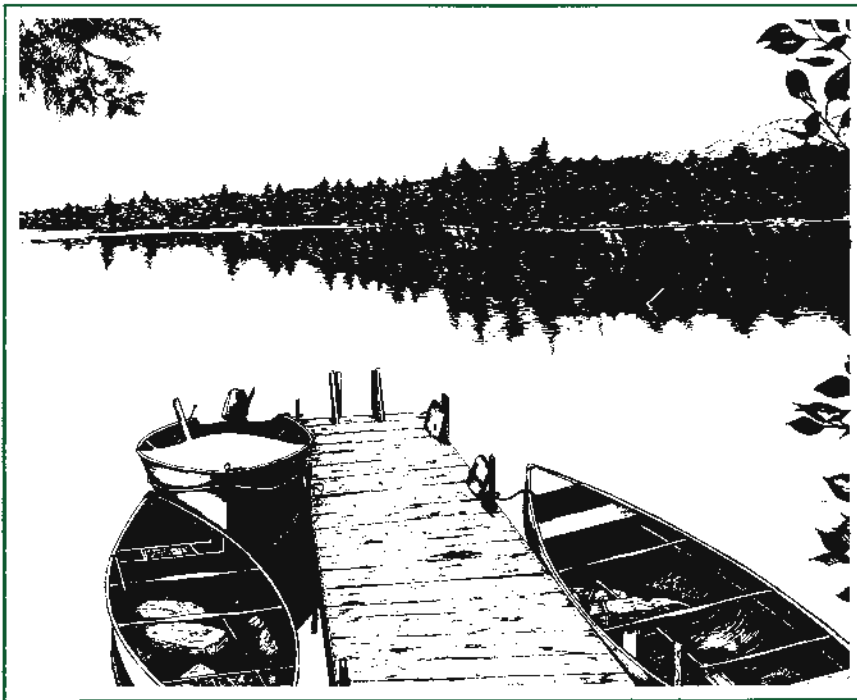
LODGING

Our 60 cottages, accommodating from 2 to 14 people, are tucked discreetly amidst 1.5 miles of shorefront pines and granite outcroppings. Built in the early part of the century, each cottage has twin beds, a fireplace, screened-in porch, a private dock and an antique ice box where ice harvested from Squam Lake is delivered, as is firewood, daily. Within our two lodge facilities, guests can rent double and single bedrooms on a daily basis. Each lodge has a large common area with a fireplace and a spacious porch overlooking the lake. All accommodations are serviced daily by our housekeeping staff.



Rockywold and Deephaven were originally separate camps, founded by two friends, idealistic New England gentlewomen who taught at Hampton Institute in Virginia. Over the years the camps gradually merged into one entity. But each cottage is assigned to either Rockywold or Deephaven, and each section has its own main dock, library, and lakefront dining hall.

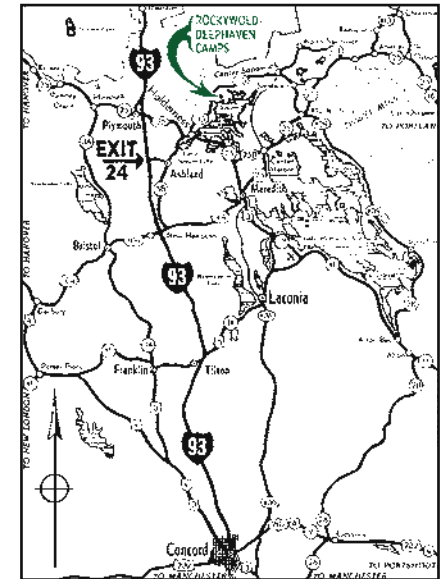
Few vacation areas have remained unchanged as long and blend so naturally with the surroundings as Rockywold-Deephaven. Most of our guests return year after year to renew old friendships and to enjoy the serenity, and we are pleased to welcome a diverse group of newcomers every year.



Drawings by RDC guests Ellen Pons and Bruce Vogel.

Rockywold-Deephaven Camps, a piece of the past located at the southern edge of the White Mountain National Forest on the north shore of Squam Lake in Holderness, N.H.

By car, the Camps are approximately four hours from Hartford, two hours from Boston, and one hour from Concord, N.H. From Concord follow I-93 north to Exit 24, Ashland; Route 3 and 25 east (4.2 miles) to Holderness; Route 113 northeast (5 miles) to the Rockywold Deephaven Camps sign on the right.



For Reservations Write or Call:

ROCKYWOLD-DEEPHAVEN CAMPS, INC.
P.O. Box B, Holderness, NH 03245
Telephone: (603) 968-3313, Fax: (603) 968-3438
E-mail: rdc@lr.net
Website: www.rdcsquam.com



Printed on Recycled Paper